



## Jersey, Christie, Headed in Right Direction

New Jerseyans, for the second survey in a row, say the state is headed in the right direction, a phenomenon not seen in eleven years of polling by Fairleigh Dickinson University's PublicMind™. According to the most recent statewide survey, 50% say the state is headed in the right direction, while 41% say it's on the wrong track. However, public employees do disagree: 50% of public employee households say the state is on the wrong track.

"This spring has not been marred by the same depth of bad feeling about funding schools as in past years," said Peter Woolley, director of the poll. "Typically, spring means fights over school budgets followed by even more fights over the state's next budget."

A majority, 51% of voters, say they have a favorable view of Gov. Chris Christie, including 29% of voters in the opposite party. Only 37% of Garden State voters say their view of him is unfavorable. A year ago in May, Christie's "favorables" were reversed, 40% favorable and 45 unfavorable.

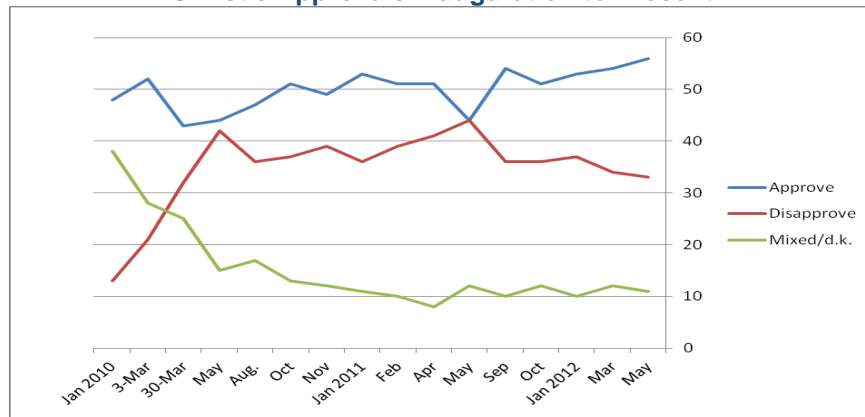
In fact, 49% say he's doing a "good" or "excellent" job, including 28% of Democrats who agree. "The good news is obvious," said Woolley. "The bad news may be that, historically, the only way to go from here is down."

At the same time, 56% of voters say they approve of the job the governor is doing, a new high for PublicMind polling of the governor's performance: 33% disapprove. A year ago in May, the governor only broke even, with 44% approving and 44% disapproving.

Women approve by a margin of 9 points (48-39), and men by the much more robust margin of 37 points (64-27). Public employees disapprove of the governor (35-52), but non-public employees approve by a 2-to-1 margin (60-29).

The Fairleigh Dickinson University poll of 797 registered voters statewide was conducted by telephone with both landline and cell phones from April 30 through May 6, 2012, and has a margin of error of +/-3.5 percentage points.

**Christie Approvals Inauguration to Present**



Methodology, questions, and tables on the web at: <http://publicmind.fdu.edu>  
 Radio actualities at 201.692.2846 For more information, please call 201.692.7032

**Methodology, Questions, and Tables**

The most recent survey by Fairleigh Dickinson University's PublicMind was conducted by telephone from April 30, 2012 through May 6, 2012, using a randomly selected sample of 797 registered voters statewide. The margin of error for a sample of 797 randomly selected respondents is +/- 3.5 percentage points. The margin of error for subgroups is larger and varies by the size of that subgroup. Survey results are also subject to non-sampling error. This kind of error, which cannot be measured, arises from a number of factors including, but not limited to, non-response (eligible individuals refusing to be interviewed), question wording, the order in which questions are asked, and variations among interviewers. PublicMind interviews are conducted by Opinion America of Cedar Knolls, NJ, with professionally trained interviewers using a CATI (Computer Assisted Telephone Interviewing) system. Random selection is achieved by computerized random-digit dialing. This technique gives every person with a land-line phone number (including those with unlisted numbers) an equal chance of being selected. Landline households are supplemented with a separate, randomly selected sample of cell-phone-only-households, interviewed in the same time frame. The total combined sample is mathematically weighted to match known demographics of age, race and gender.

**Question:** Now, thinking about New Jersey... In your opinion, do you think things in New Jersey are moving in the right direction or do you think the state has gotten off on the wrong track?

	All	Party			Gender		Public employee household	
		D	I	R	men	wom	No	Yes
Right direction	<b>50%</b>	33	54	70	57	44	52	43
Wrong track	<b>41%</b>	59	36	21	36	46	39	50
Unsure/mixed	<b>9%</b>	9	10	9	8	9	9	7

**Right /Wrong direction Christie's term**

Mar 2012	Jan 2012	Oct 2011	Sep 2011	May 2011	Apr 2011	Feb 2011	Jan 2011	Nov 2010	Oct 2010	Aug 2010	May 2010	Mar. 30 2010	Mar. 3 2010	Jan. 2010
51%	44%	46%	45%	36%	44%	44%	44%	40%	44%	42%	35%	33%	32%	27%
39%	47%	43%	47%	55%	47%	47%	48%	51%	48%	48%	55%	55%	49%	55%
10%	9%	11%	9%	9%	9%	10%	8%	10%	9%	11%	10%	13%	20%	18%

**Right/Wrong direction Corzine's term ...**

	Oct 09	Se 09	Jul 09	Apr 09	Mar 09	Jan 09	Nov 08	Oct 08	Sept 08	Jun 08	Apr 08	Fe 08	Jan 08	Oc 07	Se 07	Jn 07	My 07	Mr 06	Jan 06
<b>Right track</b>	21%	22	21	23	25	25	24	23	23	25	26	25	28	30	38	36	42	39	34
<b>Wrong track</b>	68%	68	66	64	59	65	65	67	67	64	66	65	61	59	49	50	44	47	48
<b>DK</b>	11%	10	14	13	16	10	10	10	11	12	9	10	11	12	12	14	14	15	18

**Christie Job rating, current**

**Question:** How would you rate the job Chris Christie is doing as governor... [READ]?

	All	Party			Public Employee Household		Gender	
		Dem	Ind	Rep	No	Yes	men	wom
Excellent	<b>18%</b>	5	13	38	21	8	21	14
Good	<b>31%</b>	23	37	39	33	26	35	28
Only fair	<b>27%</b>	39	26	13	25	32	27	27
Poor	<b>22%</b>	32	21	9	19	32	16	27
Unsure	<b>2%</b>	2	2	1	2	1	1	3

<b>Job rating, trend</b>	Mar 2012	Jan 2012	Oct 2011	Sep 2011	May 2011	Apr 2011	Feb 2011	Jan. 2011	Nov 2010	Oct 2010	Aug 2010	May 2010	Mar. 30 2010	Mar. 3 2010
Excellent	15	16	16	18	14	17	15	17	17	19	13	13	10	8
Good	35	32	31	28	22	26	30	27	28	26	26	24	24	31
Only fair	27	28	25	29	28	28	26	31	25	26	32	23	31	26
Poor	21	22	24	24	32	27	26	23	27	25	24	33	21	13
Unsure	2	2	3	1	3	3	3	3	4	3	6	7	14	21

**Question:** Have you heard of [rotate list]? If you haven't just tell me. [If yes, ask:] Do you have a favorable or unfavorable opinion of ...? Would that be very or somewhat?

	Haven't heard of	Very favorable	Somewhat favorable	Unsure/mixed	Somewhat unfavorable	Very unfavorable
<b>Chris Christie (all)</b>	<b>1%</b>	<b>31%</b>	<b>20%</b>	<b>11%</b>	<b>14%</b>	<b>23%</b>
<i>Republicans only</i>	1	60	22	4	4	8
<i>Independents only</i>	1	28	23	16	13	18
<i>Democrats only</i>	1	12	17	13	20	38
Previous Surveys...						
<i>Christie 1/12</i>	1%	27%	23%	10%	11%	27%
<i>Christie 10/11</i>	1%	28%	22%	11%	13%	25%
<i>Christie 09/11</i>	2%	28%	21%	9%	14%	27%
<i>Christie 05/11</i>	3%	22%	18%	11%	12%	33%
<i>Christie 04/11</i>	2%	26%	21%	9%	13%	28%
<i>Christie 02/11</i>	1%	27%	19%	11%	16%	26%
<i>Christie 01/11</i>	2%	28%	19%	11%	12%	27%
<i>Christie 11/10</i>	1%	26%	19%	13%	11%	30%
<i>Christie 10/10</i>	2%	30%	18%	11%	15%	24%
<i>Christie 8/10</i>	1%	21%	20%	21%	13%	23%
<i>Christie 5/10</i>	3%	21%	19%	14%	12%	31%
<i>Christie 3/30/10</i>	3%	18%	20%	20%	17%	22%
<i>Christie 3/3/10</i>	2%	19%	28%	25%	10%	15%
<i>Christie 1/10</i>	3%	16%	29%	28%	14%	9%
<i>Christie 10/09</i>	1%	17%	24%	14%	20%	24%
<i>Christie 09/09</i>	3%	15%	23%	25%	17%	18%
<i>Christie 07/09</i>	13%	10%	24%	28%	14%	11%
<i>Christie 04/09</i>	38%	14%	17%	20%	8%	4%
<i>Christie 03/09</i>	43%	12%	18%	22%	4%	2%
<i>Christie 01/09</i>	56%	11%	12%	15%	4%	2%
<i>Christie 09/08</i>	60%	2%	3%	14%	11%	9%

**Approve/disapprove, Current**

<b>Question: Do you approve or disapprove of the way Chris Christie is handling his job as governor?</b>								
	<b>All</b>	gender		Party			Public Employee respondents	
		men	wom	Dem	Ind	Rep	No	Yes
Approve	<b>56%</b>	64	48	36	53	83	60	35
Disapprove	<b>33%</b>	27	39	51	31	11	29	52
Mixed/unsure	<b>11%</b>	9	14	14	15	6	11	13

**Approve/disapprove, trend**

	Mar	Jan	Oct	Sep	May	Apr	Feb	Jan.	Nov	Oct	Aug.	May	Mar	Mar	Jan*
		2012						2011					30	3	2010
Approve	54	53	51	54	44	51	51	53	49	51	47	44	43	52	48
Disapprove	34	37	36	36	44	41	39	36	39	37	36	42	32	21	13
Mixed/d.k.	12	10	12	10	12	8	10	11	12	13	17	15	25	28	38

[\* Question was "...handling his transition to governor."]

## Question Wording and Order

US1-4b withheld for later release.

NJ1. Now, thinking about New Jersey... In your opinion, do you think things in New Jersey are moving in the right direction or have they gotten off on the wrong track?

- Right direction
- Wrong track
- DK/Unsure [DON'T READ]

NJ2. Now I'm going ask about some people. If you haven't heard of one of them, just say so. Have you heard of ... [ROTATE LIST]? Do you have a favorable or unfavorable opinion of... [MATCH ROTATION]? Would that be very or somewhat?

- a. Chris Christie
- b. Joe Kyrillos [withheld for later release]
- c. Robert Menendez [withheld for later release]
- d. Cory Booker [withheld for later release]

NJ3. How would you rate the job Chris Christie is doing as governor—READ...excellent, good, only fair, or poor? DK/Unsure [DON'T READ]

NJ4. [So... ]Do you approve or disapprove of the job Chris Christie is doing as governor?

- Approve
- Disapprove
- Neither [vol] or Neutral [vol]
- DK [vol] or both [vol]

### Sample Characteristics (%)

#### Gender

Male	49
Female	51

#### Age

18-29	13
30-44	23
45-59	31
60+	29
Ref.	4

#### In addition to being American, would you say you are...?

White	67
Black	14
Hispanic or Latino	11
Asian	3
Other/ref.	5

#### Public Employee Household?

yes	22
No	75
not sure/ref.	2

#### Party ID

Dem. + lean Dem.	45
ind. + unsure + ref.	23
Rep. + lean Rep.	32