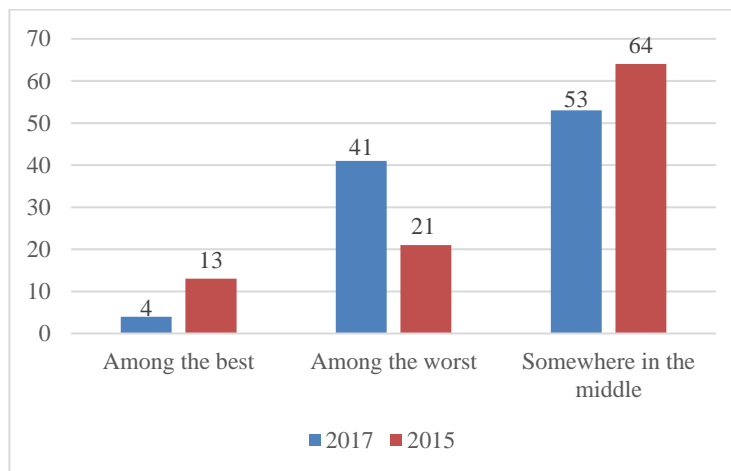


CHRISTIE: DON'T LET THE DOOR HIT YOU ON THE WAY OUT FDU POLL FINDS 41% OF VOTERS SAY HE'S BEEN AMONG NJ'S WORST GOVERNORS

Fairleigh Dickinson University, November 6, 2017 – “Don’t let the door hit you on the way out” is one way of describing Governor Christie’s abysmal relationship with New Jersey’s voters. The most recent statewide survey from Fairleigh Dickinson University’s PublicMind finds that no matter how you cut it, voters are ready to bid him farewell, with few finding any evidence that he has done much good since taking office eight years ago.

Forty-one percent regard Christie as among New Jersey’s worst governors, with 53 percent who rate him somewhere in the middle, and four percent who would rank him with the best. Two years ago, when Christie was poised to announce his candidacy for the White House, only a fifth of voters (21%) said he ranked among the worst. Moreover, across a variety of policy areas, there have been double digit increases in the number of voters who believe conditions in the state have worsened relative to opinions expressed two years ago.

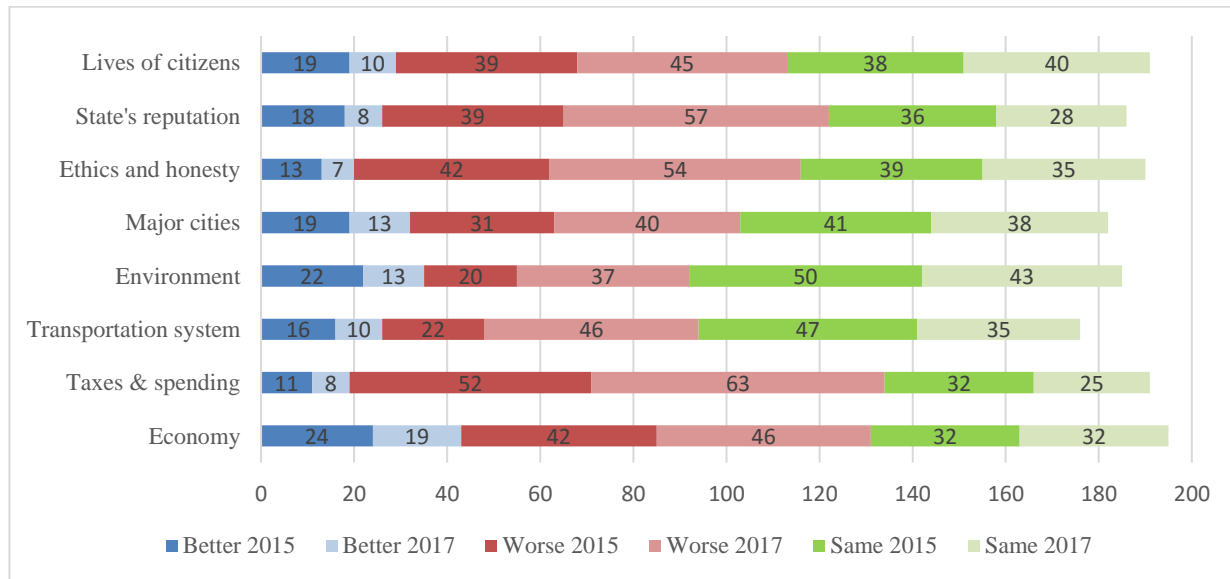
Evaluations of Governor Christie Compared with Predecessors: 2015 v. 2017



“Eight years is a long time to spend as a political leader, and Governor Christie always struggled with a legislature from the opposite party. However, there’s no escaping the reality of these numbers. Voters are ready to turn the page and leave the Christie years behind,” said Krista Jenkins, professor of political science and director of the poll.

With the exception of environmental conditions in the state, a plurality or majority of voters today say conditions in the state have worsened. In 2015, the last time these questions were asked, opinions were more equally divided between those who regarded conditions the same versus those who thought things had worsened under Governor Christie’s leadership.

Evaluations of How Conditions in New Jersey have Fared Under Governor Christie: 2015 v. 2017



Some of the biggest opinion changes have occurred in the areas of the state’s transportation system, the state’s reputation to outsiders, ethics and honesty in state government, environmental conditions, and taxes and spending. In 2015, a fifth (22%) believed the state’s transportation system had worsened in the Christie years. Today, that number has more than doubled to 46 percent. Similar harm is believed to have come to the state’s reputation, as 39 percent in 2015 said it had become worse since Christie took office, with 57 percent saying the same today. Ethical behavior is now regarded as worse today by a majority of voters (54%), whereas 42 percent said the same in 2015. A fifth (20%) in 2015 said environmental conditions have suffered under Governor Christie, and while a plurality (43%) today say that things are the same, concern for the environment has grown to 33 percent. And, taxes and spending - long a source of frustration among New Jersey voters - are regarded as worse today than they were in 2015 (63 versus 52%, respectively).

“A lot of these changes appear to be rational responses to state events. For example, it’s hard to look at the state’s transportation system in recent months and believe things are turning around. Property taxes remain the albatross around many taxpaying necks. The list just goes on. Whether fair or not, given the shared responsibility of governance with the legislature, the governor is bearing the brunt of voter frustration,” said Jenkins.

The governor has also seen an increase in the number of voters who believe he has had no real accomplishments while in office. A quarter (28%) couldn’t identify either a major or minor accomplishment in 2015, with that number increasing to 37% today. A plurality (46%) say he’s had minor accomplishments, a number that is statistically unchanged from 2015 (47%).

As for the governor’s approval rating, he ends his time in office with the lowest number recorded by the FDU Poll (which has been in existence since 2001 and has spanned four governors). Seventeen percent approve of the job he’s doing in office, with 73 percent who disapprove. The same is true for the measure of the state’s health, with concern at record levels for an FDU poll. Eighteen percent say it’s headed in the right direction and 71 percent believe help is needed.

By comparison, Governor Christie's predecessor left office with approval numbers that were upside down as well. However, Jon Corzine still had a higher approval rating when he left office than Governor Christie, with numbers that were more than double those for the current governor (37% approve; 52% disapprove).

"When you look at these numbers from a big picture perspective, they suggest a toxic mix of voter discontent as we head into tomorrow's election. It's hard to imagine that a single person - be it Murphy or Guadagno or someone else - will be able to turn things around in the minds of voters. There's a lot of work to be done in this state, and voters are looking for more than just campaign promises," said Jenkins.

Methodology, questions, and tables on the web at: <http://publicmind.fdu.edu>

Radio actualities at 201.692.2846

For more information, please call 201.692.7032

Methodology - The Fairleigh Dickinson University poll was conducted by landline and cellular telephone October 11-15, 2017 among a random sample of 875 using a listed sample of registered voters with a known history of voting in past elections. Results have a margin of sampling error of +/- 3.7 percentage points, including the design effect.

Survey results are also subject to non-sampling error. This kind of error, which cannot be measured, arises from a number of factors including, but not limited to, non-response (eligible individuals refusing to be interviewed), question wording, the order in which questions are asked, and variations among interviewers.

PublicMind interviews are conducted by Opinion America of Cedar Knolls, NJ, with professionally trained interviewers using a CATI (Computer Assisted Telephone Interviewing) system. Random selection is achieved by computerized random-digit dialing. This technique gives every person with a landline phone number (including those with unlisted numbers) an equal chance of being selected.

The total combined sample is mathematically weighted to match known demographics of age, sex, race, and education. 520 interviews were conducted on landlines and 355 were conducted on cellular telephones.

The sample was purchased from Marketing Systems Group and the research was funded by Fairleigh Dickinson University.

Past surveys used for comparison in this analysis were based on registered voters who were not drawn from a listed sample of those with a known history of voting in past elections.

PublicMind recently received an "A" rating from statistician Nate Silver's FiveThirtyEight blog. The ratings measure both accuracy and bias for all major polling services in the United States, providing an update to similar research the poll watchers conducted in 2014. PublicMind's "A" rating puts it in the top 14 of the more than 380 polling institutes reviewed and graded from A+ through F. PublicMind was found to have a 94 percent accuracy rate for predicting election results, and is one of only two A-rated polling institutes with zero bias to their rankings.

Tables

And turning to New Jersey, do you approve or disapprove of the job Chris Christie is doing as governor? [Randomize approve/disapprove]

	PID				Gender		Race		Education		Age		
	All	Dem	Ind	Repub	Male	Female	White	Non-white	HS/Some college	College+	18-34	35-59	60+
Approve	17%	7	9	34	21	13	18	16	15	19	13	17	18
Disapprove	73%	89	82	49	69	77	72	78	73	74	77	74	71
Neither/Neutral (vol)	5%	2	5	8	6	4	5	4	6	4	6	4	6
DK/Both (vol)	3%	1	4	7	3	4	4	1	4	3	3	3	4
Refused (vol)	1%	0	1	2	1	1	1	0	2	1	1	2	1

In your opinion, do you think things in New Jersey are moving in the right direction or are they on the wrong track? [Randomize right direction/wrong track]

	PID				Gender		Race		Education		Age		
	All	Dem	Ind	Repub	Male	Female	White	Non-white	HS/Some college	College+	18-34	35-59	60+
Right direction	18%	11	13	31	22	15	17	23	20	18	19	20	17
Wrong track	71%	78	75	59	68	73	72	67	69	72	68	71	71
DK (vol)	10%	10	10	10	9	11	10	9	10	10	10	9	11
Refused (vol)	1%	1	1	1	1	1	1	1	1	1	3	1	1

Since Governor Christie took office in 2009, would you say he's had major accomplishments, minor accomplishments, or no real accomplishments as governor?

			PID			Gender		Race		Education		Age		
	2017	2015	Dem	Ind	Repub	Male	Female	White	Non-white	HS/Some college	College	18-34	35-59	60+
Major	13%	17%	6	11	24	16	10	16	5	12	14	7	14	13
Minor	46%	47%	44	43	51	45	47	45	48	45	46	51	47	43
None	37%	28%	46	41	22	34	40	36	39	39	36	38	35	39
Both (vol)	2%	3%	3	3	2	4	1	1	6	3	2	2	3	3
DK/Ref (vol)	1%	6%	1	2	1	1	2	2	0	1	2	2	1	1

Overall, how would you rate Governor Christie? Has he been one of New Jersey's best governors, one of its worst, or is he somewhere in the middle?

			PID			Gender		Race		Education		Age		
	2017	2015	Dem	Ind	Repub	Male	Female	White	Non-white	HS/Some College	College	18-34	35-59	60+
Best	4%	13%	1	4	9	5	3	4	4	4	4	3	4	4
Worst	41%	21%	59	46	13	36	45	40	44	38	43	39	41	41
Middle	53%	64%	38	47	77	57	50	55	50	56	51	55	54	53
DK/Ref (vol)	1%	2%	2	3	1	2	2	1	2	2	2	3	1	1

I'm going to read you some issue areas. For each please just tell me if it has become better or worse since Chris Christie became governor. First... [randomize]...

<i>The economy in New Jersey</i>														
			PID			Gender		Race		Education		Age		
	2017	2015	Dem	Ind	Repub	Male	Female	White	Non-white	HS/Some college	College	18-34	35-59	60+
Better	19%	24%	11	14	33	27	13	20	19	17	21	15	20	20
Worse	46%	42%	54	57	30	40	51	46	46	45	46	39	47	46
Same	32%	32%	32	24	34	30	33	31	34	35	29	42	31	30
DK/Ref (vol)	3%	3%	2	5	3	3	3	3	2	3	3	5	2	4

<i>The state's transportation system</i>														
			PID			Gender		Race		Education		Age		
	2017	2015	Dem	Ind	Repub	Male	Female	White	Non-white	HS/Some college	College	18-34	35-59	60+
Better	10%	16%	7	9	14	11	8	9	13	10	10	18	8	10
Worse	46%	22%	60	49	27	46	46	47	43	40	50	33	46	49
Same	35%	47%	25	36	50	35	36	34	37	37	35	42	38	32
DK/Ref (vol)	8%	15%	8	6	9	7	10	9	6	14	6	7	8	10

<i>State government ethics and honesty</i>														
			PID			Gender		Race		Education		Age		
	2017	2015	Dem	Ind	Repub	Male	Female	White	Non-white	HS/Some college	College	18-34	35-59	60+
Better	7%	13%	1	5	15	10	4	7	6	7	7	2	8	6
Worse	54%	42%	69	61	32	50	59	53	60	54	55	49	58	51
Same	35%	39%	26	32	48	36	34	36	31	36	34	39	33	36
DK/Ref (vol)	4%	6%	4	2	5	5	3	5	3	4	5	10	1	6

<i>Environmental conditions in the state</i>														
			PID			Gender		Race		Education		Age		
	2017	2015	Dem	Ind	Repub	Male	Female	White	Non-white	HS/Some college	College	18-34	35-59	60+
Better	13%	22%	5	14	23	17	9	15	4	13	12	13	12	14
Worse	37%	20%	55	33	15	33	42	36	43	35	39	36	36	39
Same	43%	50%	34	44	55	45	40	42	46	47	40	43	43	43
DK/Ref (vol)	8%	8%	6	10	7	5	9	7	8	5	9	9	9	5

<i>The state's major cities</i>														
			PID			Gender		Race		Education		Age		
	2017	2015	Dem	Ind	Repub	Male	Female	White	Non-white	HS/Some college	College	18-34	35-59	60+
Better	13%	19%	12	10	17	17	10	13	13	12	14	12	17	9
Worse	40%	31%	44	46	31	38	41	40	40	38	41	30	39	44
Same	38%	41%	35	37	42	35	40	37	39	38	37	49	35	37
DK/Ref (vol)	10%	9%	9	7	10	10	9	10	8	12	8	9	9	11

<i>Taxes and spending in the state</i>														
			PID			Gender		Race		Education		Age		
	2017	2015	Dem	Ind	Repub	Male	Female	White	Non-white	HS/Some college	College	18-34	35-59	60+
Better	8%	11%	2	7	17	9	7	9	4	8	9	7	9	7
Worse	63%	52%	70	74	51	63	64	61	69	65	62	60	62	65
Same	25%	32%	24	17	30	25	25	26	23	25	26	19	27	24
DK/Ref (vol)	3%	5%	4	2	3	2	4	3	3	2	3	14	1	3

<i>The state's reputation to outsiders</i>														
			PID			Gender		Race		Education		Age		
	2017	2015	Dem	Ind	Repub	Male	Female	White	Non-white	HS/Some college	College	18-34	35-59	60+
Better	8%	18%	5	7	11	10	5	6	13	9	7	10	7	7
Worse	57%	39%	69	64	39	54	61	60	52	46	65	55	60	55
Same	28%	36%	19	25	42	29	28	28	29	35	24	27	28	29
DK/Ref (vol)	6%	7%	6	4	8	7	5	6	6	9	5	8	5	9

<i>The lives of people who live in New Jersey</i>														
			PID			Gender		Race		Education		Age		
	2017	2015	Dem	Ind	Repub	Male	Female	White	Non-white	HS/Some college	College	18-34	35-59	60+
Better	10%	19%	3	5	21	14	7	11	9	12	9	6	10	11
Worse	45%	39%	56	50	30	40	50	47	41	44	46	39	49	42
Same	40%	38%	37	39	44	41	39	38	46	40	39	49	37	41
DK/Ref (vol)	4%	5%	4	6	4	5	4	4	4	3	5	6	3	6

Question wording and order

US1 and US2 released previously

NJ1. *And turning to New Jersey, do you approve or disapprove of the job Chris Christie is doing as governor?*
[Randomize approve/disapprove]

- 1 Approve
- 2 Disapprove
- 3 Neither (vol)
- 8 DK (vol)
- 9 Refused (vol)

	1/10	3/3/10	3/30/10	5/10	8/10	10/10	11/10	1/11	2/11	4/11	5/11	9/11	10/11	1/12
Approve	48	52	43	44	47	51	49	53	51	51	44	54	51	53
Disapprove	31	21	32	42	36	37	39	36	39	41	44	36	36	37

	3/12	5/12	8/12	9/12	11/12*	11/12**	1/13	3/13	6/13	8/13	10/13	11/13	1/14	3/14
Approve	54	56	55	51	56	77	73	66	61	58	62	61	48	41
Disapprove	34	33	35	35	33	17	19	20	26	29	35	24	39	44

*Pre-election; **Post-election

	6/14	7/14	9/14	10/14	1/15	2/15	4/15	6/15	11/15	1/16	2/16	5/16	6/16	10/16	12/16
Approve	44	44	46	41	39	35	36	30	34	31	30	26	26	21	18
Disapprove	44	41	40	47	47	51	50	55	56	59	61	66	62	72	73

	1/17	3/17	10/17
Approve	18	20	17
Disapprove	78	72	73

NJ2 *In your opinion, do you think things in New Jersey are moving in the right direction or are they on the wrong track? [Randomize right direction/wrong track]*

- 1 Right direction
- 2 Wrong track
- 8 DK (vol)
- 9 Refused (vol)

	1/10	3/3/10	3/30/10	5/10	8/10	10/10	11/10	1/11	2/11	4/11	5/11	9/11	10/11	1/12
Right direction	27	32	33	35	42	44	40	44	44	44	36	45	46	44
Wrong track	55	49	55	55	48	48	51	48	47	57	55	47	43	47

	3/12	5/12	8/12	9/12	11/12*	11/12*	1/13	3/13	6/13	8/13	11/13	1/14	3/14
Right direction	51	50	49	52	58	69	61	57	57	49	56	51	41
Wrong track	39	41	40	34	30	19	26	26	28	34	28	39	45

*Pre-election; **Post-election

	6/14	7/14	9/14	10/14	1/15	2/15	4/15	6/15	11/15	1/16	2/16	5/16	6/16	10/16	12/16
Right direction	40	39	40	37	36	33	35	28	32	30	29	23	23	20	20
Wrong track	48	46	44	49	49	52	54	57	59	60	59	69	67	71	70

	1/17	3/17	10/17
Right direction	20	24	18
Wrong track	73	67	71

ELEC3 through ELEC8 released previously

NJ3A/B through NJ5 withheld

NJ6 *Since Governor Christie took office in 2009, would you say he's had major accomplishments, minor accomplishments, or no real accomplishments as governor?*

- 1 Major
- 2 Minor
- 3 No real accomplishments
- 4 Both major and minor (vol)
- 8 DK (vol)
- 9 Refused (vol)

NJ7 *I'm going to read you some issue areas. For each please just tell me if it has become better or worse or hasn't changed since Chris Christie became governor. First... [randomize]...*

- NJ7A The economy in New Jersey
- NJ7B The state's transportation system
- NJ7C State government ethics and honesty
- NJ7D Environmental conditions in the state
- NJ7E The state's major cities
- NJ7F Taxes and spending in the state
- NJ7G The state's reputation to outsiders
- NJ7H The lives of people who live in New Jersey

- 1 Better
- 2 Worse
- 3 Same
- 8 DK (vol)
- 9 Refused (vol)

NJ8 Overall, how would you rate Governor Christie? Has he been one of New Jersey's best governors, one of its worst, or is he somewhere in the middle?

- 1 Best
- 2 Worst
- 3 Middle
- 8 DK (vol)
- 9 Refused (vol)

Sample characteristics

Male 49%
 Female 51%

Democrat (with leaners) 47%
 Republican (with leaners) 35%
 Independent 15%

18-34 10%
 35-59 51%
 60+ 39%

White 73%
 African-American 12%
 Latino 10%
 Asian 2%
 Other/refused 3%